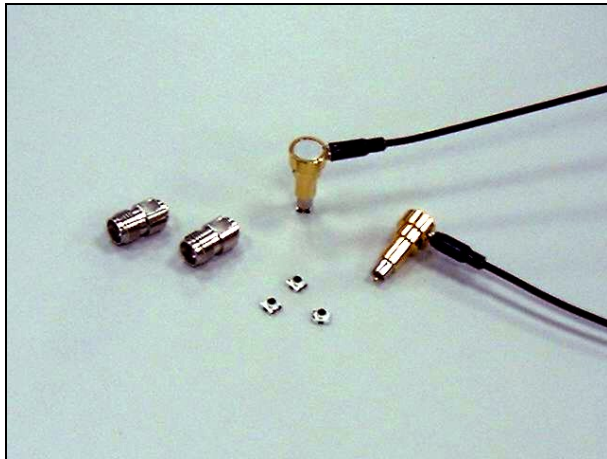


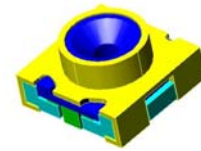
Sunridge MCC Series – 6GHz RF Switch Connector



Sunridge MCC RF switch connector addresses the increasing industrial demand where an efficient, accurate and reliable method for antenna verification on board is a must. Typical of Sunridge MC (Miniature Coaxial) RF interconnect family which consists of MCA, MCB, MCC aboard and MCD series; MCC features smaller form factor, light weight and performance up to 6 GHz.



Features



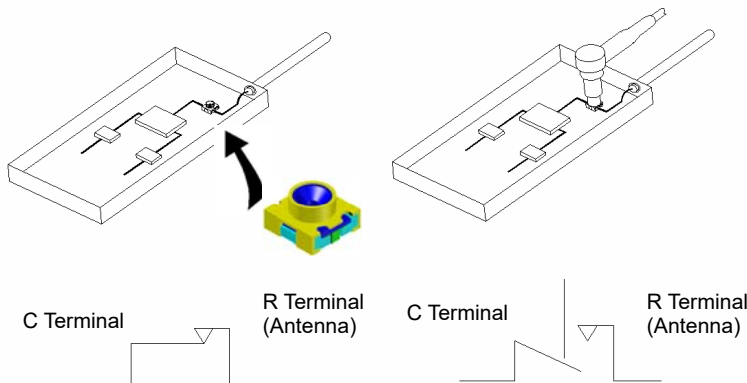
- Space Economy: PCB footprint of 3.0mm x 3.0mm, x 1.8mm height
- Provides a cost effective test point on production PCBA for antenna circuit performance verification.
- Insertion loss: 0.2dB max, VSWR: 1.2 max.
- Notch identification for ground and input signal pads.
- Complete offerings of test probe for production set up, and SMA adaptor for test probe calibration.
- Custom engineering design solution available upon request.

Typical application:

Cellular Phone, WiFi, and variety of wireless information devices

Schematic design:

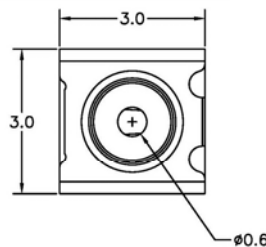
Antenna stays connected to the RF circuit at default setting. When connected to the test probe, the antenna stands alone : for on board verification test, fine tuning, or diagnosis.



Production Test Socket

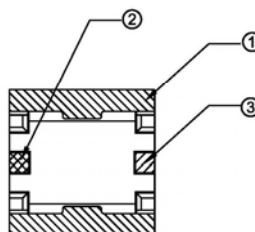
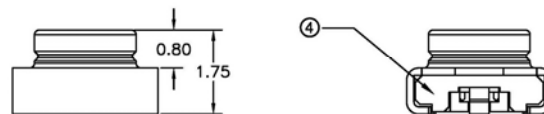
PN: MCC-ST- 00T

- Select copper material for spring contact to ensure reliability.
- Groove feature helps secure connection with test probe.
- High temper plastic resin to sustain IR reflow process.



Notes:

- ① Ground Contact: Copper Alloy, Gold Plated.
- ② Input Contact: Copper Alloy, Gold Plated.
- ③ OutputContact: Copper Alloy, Gold Plated.
- ④ Insulator: Engineering Plastic.



Characteristics	
Frequency Range	DC to 6GHz
Nominal Impedance	50 ohm
Temperature Range	-40°C to +90°C
Voltage Rating	250Vrms
Contact Resistance	50m ohm max
Withstanding Voltage	AC 300Vms
Insulation Resistance	500M ohm min
Durability	500 Cycles



www.sunridgecorp.com

Sunridge Corporation

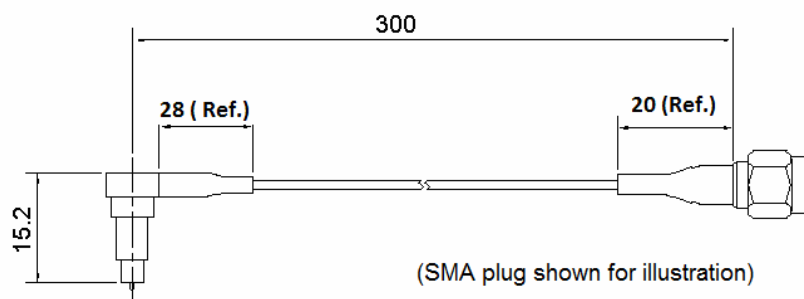
(dimension: mm)

Specialist in Interconnect Solutions





Test Probe



For easy and durable use with production socket Pn MCC-ST-00T.

Characteristics

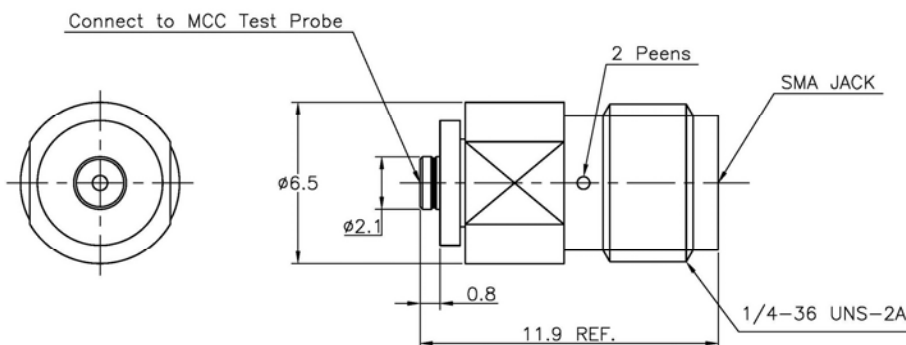
Frequency Range	DC to 6GHz
Nominal Impedance	50 ohm
Temperature Range	-40°C to +90°C
Voltage Rating	250Vrms
Contact Resistance	15m ohm max
Withstanding Voltage	AC 300Vms
Insulation Resistance	500m ohm min
Durability	10,000 Cycles

Cable & RF Connector Selection	Sunridge P/N
Flexible 1.33mm Cable (RG-178 grade), SMA Plug	MCC-TP-300-SMAP201
Flexible 1.33mm Cable (RG-178 grade), SMA Bulkhead Jack	MCC-TP-300-SMAJB201
RG-178 Cable of 1.80mm OD, SMA Plug	MCC- TP-300-SMAP301
RG-178 Cable of 1.80mm OD, SMA Bulkhead Jack	MCC- TP-300-SMAJB301

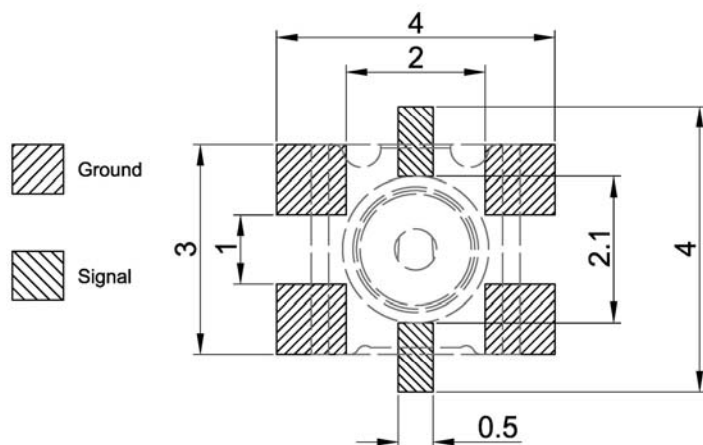
◆ Custom configuration is available upon request.

Correlation Adaptor: MCCP-SMAJ

Efficiency of production probe test is achievable only if the performance characteristics of the test probe itself is a known constant. Probe adaptor provides for an easy hookup from the probe head onto network analyzer, for accurate performance measurement of the test probe cable assembly.



Recommended PCB Layout



Probe Correlation Program

To provide a key reference data for production set up, probe calibration program is available. For each test probe purchased, Sunridge can supplement a performance test report and the same probe adaptor with which the test measurement is conducted.

