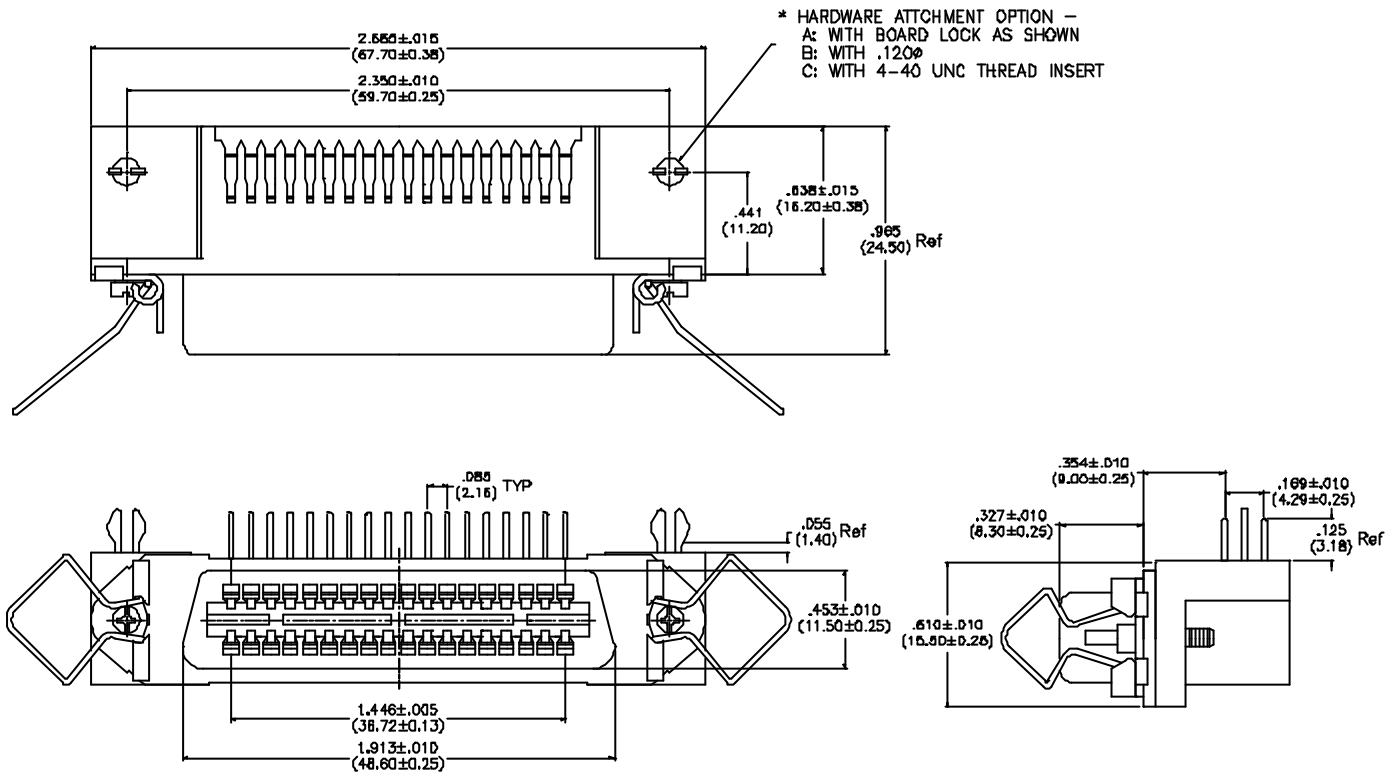


# SUNRIDGE

## 66XX4- SERIES

### CENTRONIC CONNECTOR, PLUG, RECEPTABLE, RIGHT ANGLE, PCB MOUNT



#### P/N DESIGNATION

66   4   -        -         
           1  2 3 4 5 6 7

- 1 NUMBER OF CONTACTS
- 2 INSULATOR COLOR-  
 0: BLACK  
 6: BLUE
- 3 SHELL/MOUNTING HARDWARE PLATING -  
 4: TIN PLATED
- 4 CONTACT GOLD PLATING THICKNESS  
 0: GOLD FLASH  
 2: 10 u" GOLD  
 3: 15 u" GOLD  
 6: 30 u" GOLD

- 5 \*HARDWARE ATTACHMENT OPTION-  
 A: WITH BOARD LOCK AS SHOWN  
 B: WITH .120  
 C: WITH 4-40 UNC THREAD INSERT
- 6 BALL LOCK POTION  
 1: WITH BALL LOCK. INSTALLED  
 2: WITH BALL LOCK. SEPERATED PACKAGED  
 3: WITHOUT BALL LOCK
- 7 CONFUIRATION OPTION-  
 1: SOLDED LEAD LENGTH: .187"  
 2: SOLDER LEAD LENGTH: .125" AS SHOWN  
 3-9: RESERVED FOR SPECIAL CUSTOM CONFIGURATION

BASIC P/N	NO. OF CONTACT	DIMENSIONS IN (MM)				
		A	B	C	D	E
66144-	14	.992(25.20)	1.417(36.00)	1.728(43.90)	.894(22.70)	.510(12.96)
66244-	24	1.417(36.00)	1.843(48.80)	2.153(54.70)	1.335(33.90)	.935(23.76)
66364-	36	1.925(48.90)	2.350(59.70)	2.665(67.70)	1.843(46.80)	1.446(36.72)
66504-	50	2.524(64.10)	2.949(74.90)	3.260(82.80)	2.431(61.75)	2.041(51.84)