

SUNRIDGE

56005 SERIES

2.50 MM (.098") CENTERLINE DISCONNECTABLE CRIMP CONNECTOR

PRODUCT FEATURES:

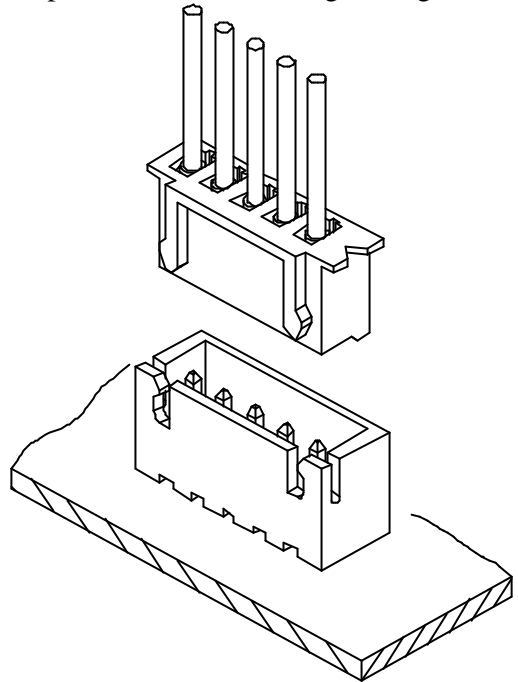
- .098" (2.50MM) centerline, full size range of 2 to 20 positions in both vertical (top entry) and right angle (side entry) versions for crimped wire to board application.
- Compactly design for low after-mating profile: for vertical version, .386" (9.80 MM) height above the board, for right angle version, .240" (6.10 MM) height above the board.
- Selectively kinked header post helps in board retention prior to solder. Extended flange of header shroud (R/A version) secures mounting stability to PCB.
- Wrapped-back crimp terminal ensures sturdy contact pressure along with anti-overstress feature.
- Four wall header shroud with keyway slot ensures polarized and aligned insertion with housing. Fully enclosed post shroud also prevents entrapment of solder related contamination, and pin deformation or damage during handling.

MATERIAL:

Insulator: Nylon 6/6, U L94-V0 rated
Pin Contact: Copper alloy, tin plated

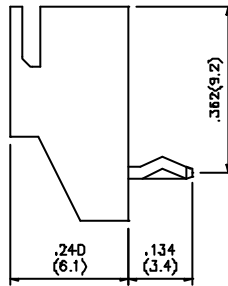
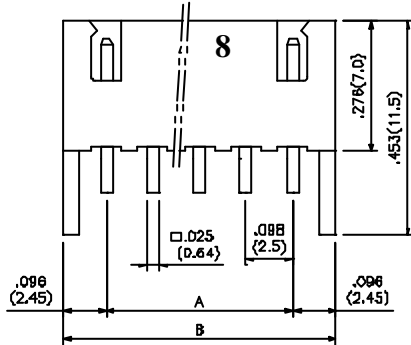
PERFORMANCE CHARACTERISTICS:

Current Rating: 3Amper
Voltage Rating: 250 V AC
Insulation resistance: 1000 Megohm min
Contact Resistance: 10 miliohm max
Withstanding Voltage: 1000 V AC / minute
Applicable PCB Thickness: .063" (1.60MM)
Applicable Wire: AWG #30 to #22
Operating Temperature: -25 to +85

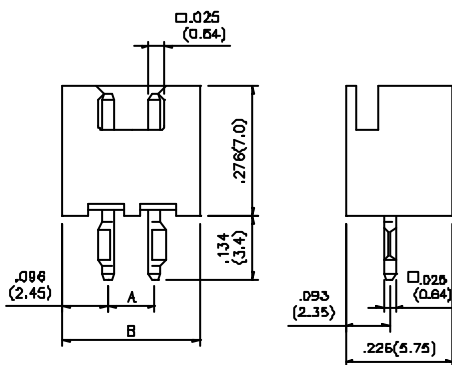


CONTACT P/N 56005 - T

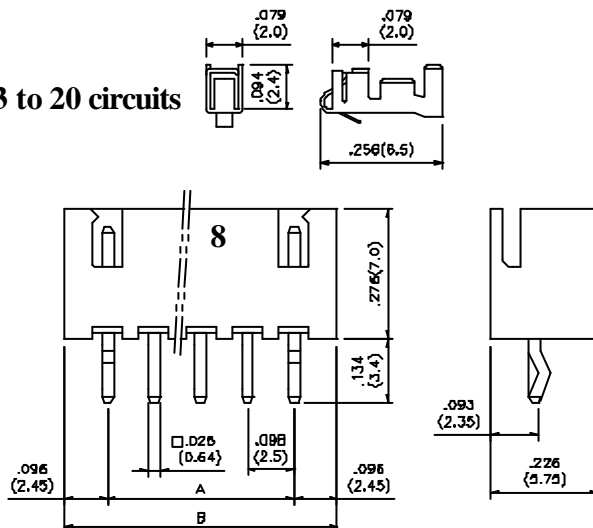
SHROUDED PIN HEADER



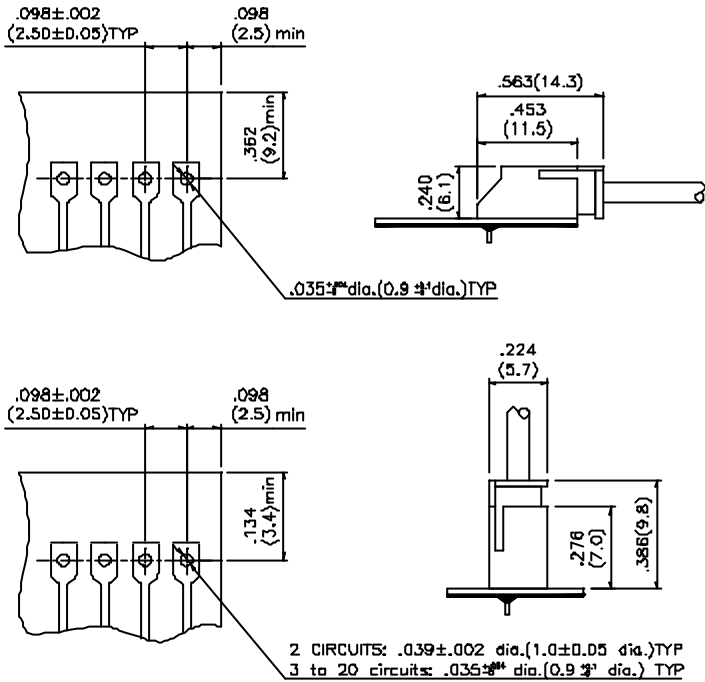
2 circuits



3 to 20 circuits

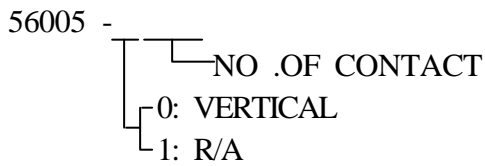


SUNRI DGE

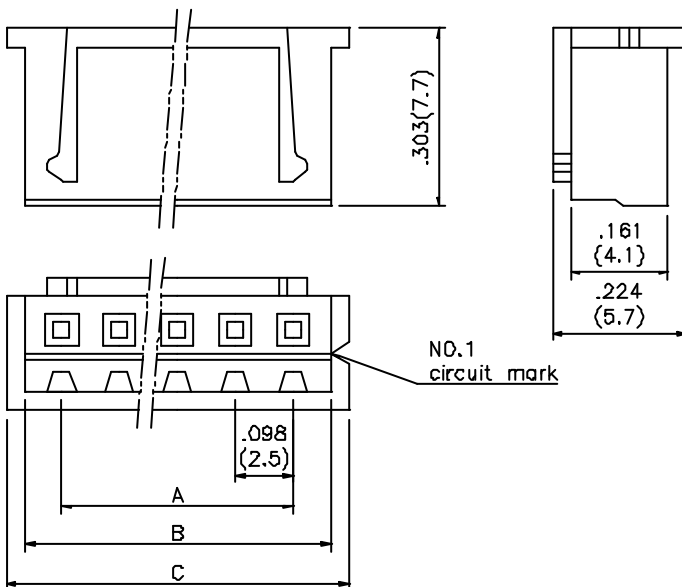


NO. OF POSITION	P/N		DIMENSION IN (MM)	
	VERTICAL	RIGHT ANGLE	A	B
2	56005-002	56005-102	.098(2.50)	.291(7.40)
3	56005-003	56005-103	.197(5.00)	.390(9.90)
4	56005-004	56005-104	.295(7.50)	.488(12.40)
5	56005-005	56005-105	.394(10.00)	.587(14.90)
6	56005-006	56005-106	.492(12.50)	.685(17.40)
7	56005-007	56005-107	.591(15.00)	.783(19.90)
8	56005-008	56005-108	.689(17.50)	.882(22.40)
9	56005-009	56005-109	.787(20.00)	.980(24.90)
10	56005-010	56005-110	.886(22.50)	1.079(27.40)
11	56005-011	56005-111	.984(25.00)	1.177(29.90)
12	56005-012	56005-112	1.083(27.50)	1.276(32.40)
13	56005-013	56005-113	1.181(30.00)	1.374(34.90)
14	56005-014	56005-114	1.280(32.50)	1.472(37.40)
15	56005-015	56005-115	1.378(35.00)	1.571(39.90)
20	56005-020	56005-120	1.870(47.50)	2.063(52.40)

P/N DESIGNATION



HOUSING (P/N 56005 - 3)



NO. OF POSITION	P/N	DIMENSION IN (MM)		
		A	B	C
2	56005-302	.098(2.50)	.224(5.70)	.287(7.30)
3	56005-303	.197(5.00)	.323(8.20)	.386(9.80)
4	56005-304	.295(7.50)	.421(10.70)	.484(12.30)
5	56005-305	.394(10.00)	.520(13.20)	.583(14.80)
6	56005-306	.492(12.50)	.618(15.70)	.681(17.30)
7	56005-307	.591(15.00)	.717(18.20)	.780(19.80)
8	56005-308	.689(17.50)	.815(20.70)	.878(22.30)
9	56005-309	.787(20.00)	.913(23.20)	.976(24.80)
10	56005-310	.886(22.50)	1.012(25.70)	1.075(27.30)
11	56005-311	.984(25.00)	1.110(28.20)	1.173(29.80)
12	56005-312	1.083(27.50)	1.209(30.70)	1.272(32.30)
13	56005-313	1.181(30.00)	1.307(33.20)	1.370(34.80)
14	56005-314	1.280(32.50)	1.406(35.70)	1.469(37.30)
15	56005-315	1.378(35.00)	1.504(38.20)	1.567(39.80)
20	56005-320	1.870(47.50)	1.996(50.70)	2.059(52.30)