

SUNRIDGE

84XX1- SERIES

.100" (2.54 MM) CENTERLINE IDC PIN HEADER

PRODUCT FEATURES:

- .100" (2.54MM) centerline IDC pin header with comprehensive size range from 10 to 64 positions.
- .025" (.64MM) square pins mate with industries-standard .100" spacing receptacle, while insulation displacement end mass-terminates .050" (1.27MM) spacing ribbon cable.
- Center polarization slot and pin #1 indicator ensure proper alignment with mating pin header and terminating ribbon cable.
- Rigidly constructed wall shield pins from damage prior to mating.
- Bracket option (in slot design for versatile accommodation) enhances positive mounting with the mating connectors.
- Ideal choice for applications of splice connection, I/O interface, or as a T-tab from cable bus.

MATERIAL:

Housing (and strain relief): GF PBT, UL 94 V-0 in black or gray color.

Contact: Copper alloy, underplated with nickel, tin plated, or gold plated with option in plating thickness.

PERFORMANCE CHARACTERISTICS:

Current Rating: 1 Amper

Dielectric Withstanding Voltage: 1000 V AC

Insulation resistance: 5000 Megohm min

Contact Resistance: 15 miliohm max

Operating Temperature: -55 to +125

P/N DESIGNATION

$\frac{84}{1} \quad \frac{1}{2} \quad \frac{\quad}{3} \quad \frac{\quad}{4} \quad 5$

1: NO .OF CONTACT

2: POLARIZATON KEY OPTION

0: WITHOUT MOUNTING BRACKEY

1: WITH MOUNTING BRACKEY

3: STRAIN RELIEF OPTION

0: WITHOUT STRAIN RELIEF

1: WITH STRAIN RELIEF

4: INSULATOR COLOR OPTION

0: BLACK

8: GRAY

5: GOLD PLATING THICKNESS OPTIONS:

T: TIN PLATED

0: GOLD FLASH

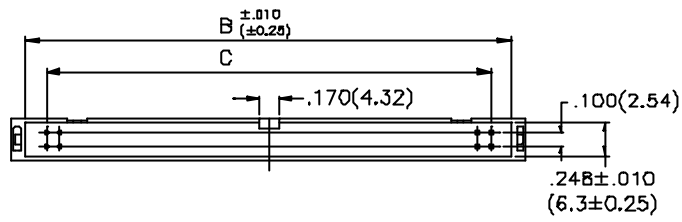
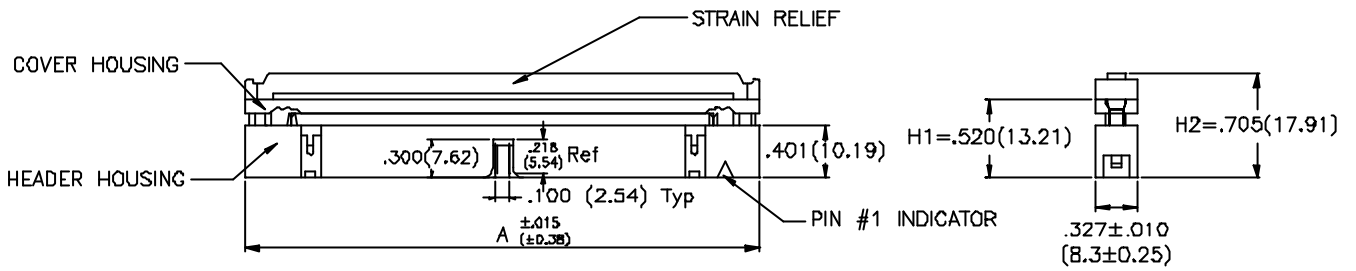
2: 10 u" GOLD

3: 15 u" GOLD

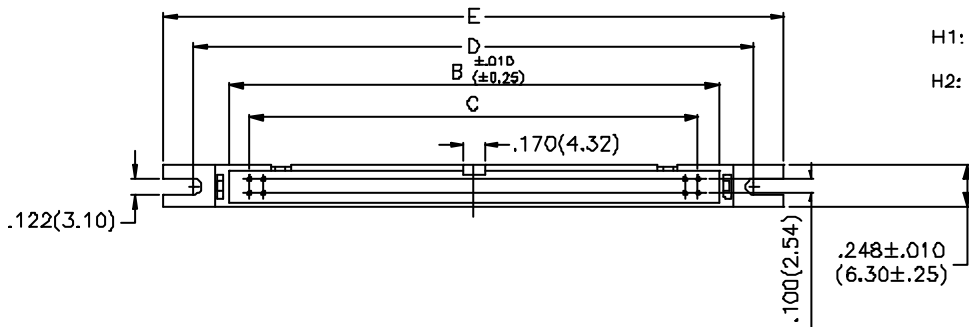
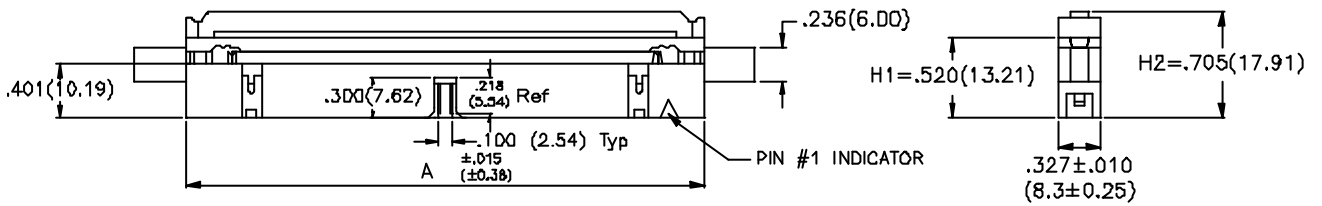
6: 30 u" GOLD

NO. OF POSITION	BASIC P/N	DEMENSIONS IN (MM)				
		A	B	C	D	E
10	84101-	.900(22.86)	.710(18.03)	.400(10.16)	1.200(30.48)	1.500(38.10)
14	84141-	1.100(27.94)	.910(23.11)	.640(15.24)	1.400(35.56)	1.700(43.18)
16	84161-	1.200(30.59)	1.010(25.65)	.800(17.76)	1.500(38.10)	1.800(45.72)
20	84201-	1.400(35.56)	1.210(30.73)	.900(22.86)	1.700(43.18)	2.000(50.80)
24	84241-	1.600(40.64)	1.410(35.81)	1.100(27.94)	1.900(48.26)	2.200(55.90)
26	84261-	1.700(43.18)	1.510(38.35)	1.200(30.48)	2.000(50.80)	2.300(58.42)
30	84301-	1.900(48.26)	1.710(43.43)	1.400(35.56)	2.200(55.88)	2.500(63.50)
34	84341-	2.100(53.34)	1.910(48.51)	1.600(40.64)	2.400(60.96)	2.700(68.58)
40	84401-	2.400(60.96)	2.200(56.13)	1.900(48.26)	2.700(68.58)	3.000(76.20)
50	84501-	2.900(48.36)	2.700(68.83)	2.400(60.96)	3.200(81.28)	3.500(88.90)
60	84601-	3.400(86.36)	3.200(81.53)	2.900(73.66)	3.700(93.98)	4.000(101.60)
64	84641-	3.600(91.44)	3.400(86.61)	3.100(78.74)	3.900(99.06)	4.200(106.76)

SUNRIDGE



WITH MOUNTING BRACKET



H1: HEIGHT WITHOUT STRAIN RELIEF, AFTER TERMINATION
 H2: HEIGHT WITH STRAIN RELIEF, AFTER TERMINATION

WITH MOUNTING BRACKET